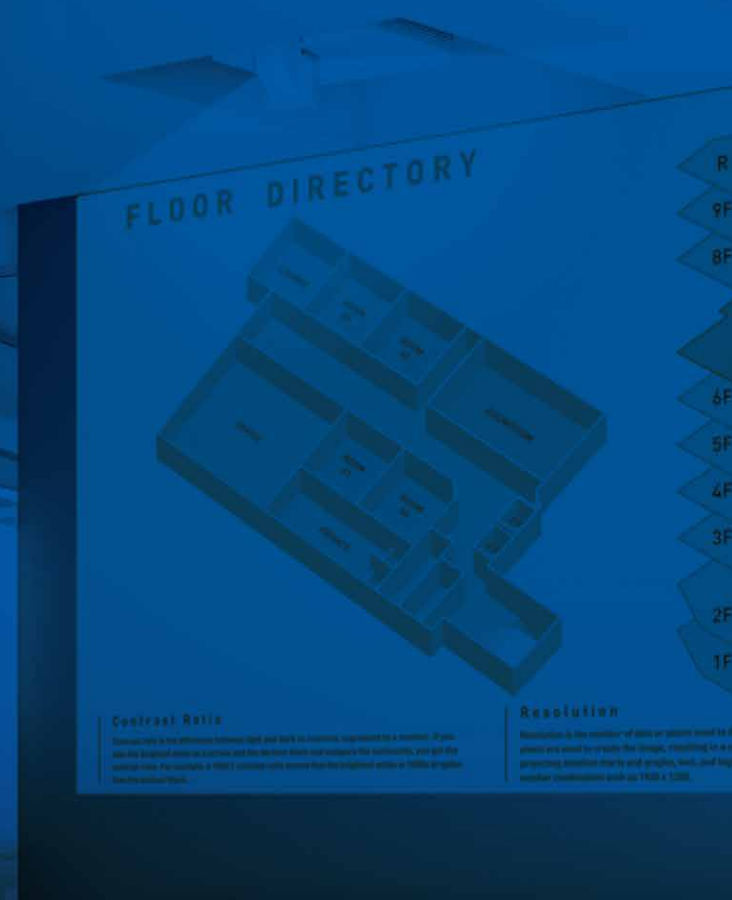


Through Your Image in Any Venue



EB-L1495U/L1505UH/L1715S/L1755U



EB-L1490U/L1500UH



EB-L1060U/L1070U

Superior Image Quality

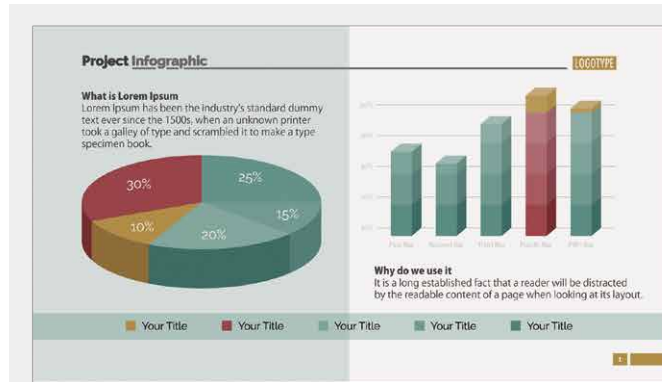
3LCD

All Epson projectors use 3LCD technology, offering distinct advantages compared to 1-chip projectors. 3LCD projectors are superior in light efficiency:

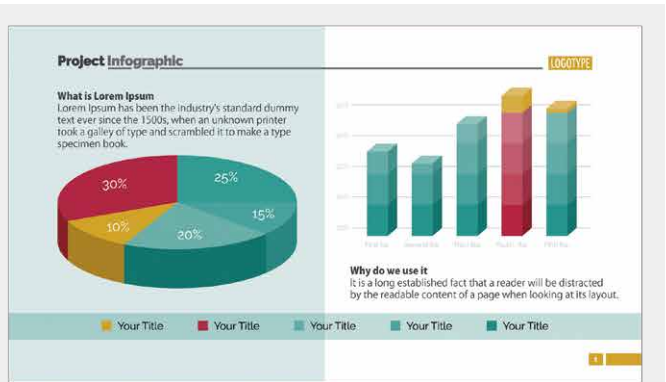
- Up to three times brighter color* reproduction
- No rainbow effect

3LCD projectors do not employ a color wheel found in 1-chip DLP® modelst†, thereby eliminating the annoying rainbow effect.

† DLP is a registered trademark or a trademark of Texas Instruments in the US and/or other countries.



1-chip DLP



3LCD

Up to Three Times Brighter Colors

3LCD projectors produce up to three times brighter colors compared to 1-chip DLP projectors. This is because 3LCD projectors reproduce images by combining three primary colors of light efficiently than the competing technology. So people can see vivid and vibrant images.

*Color brightness (color light output) in brightest mode, measured by a third-party lab in accordance with IDMS 15.4. Color brightness will vary depending on usage conditions. Top-selling Epson 3LCD projectors versus top-selling 1-chip DLP projectors based on PMA Research sales data for Dec. 2015 through Nov.2016.



No Rainbow Effect

The rainbow effect is an artifact that can occur on any 1-chip DLP projector with a color wheel. 3LCD projectors are free from the rainbow effect since all three primary colors of light are combined in the optical engine and to project all of the colors, all of the time.



High Contrast

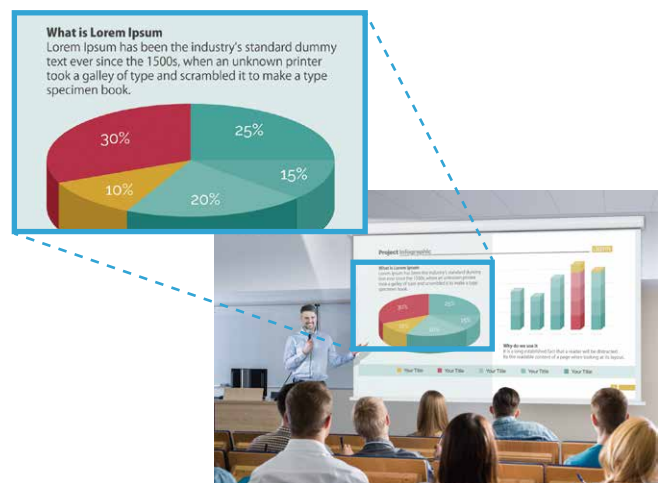
With high contrast of 2,500,000:1 or higher, it is possible to fully depict gradations even in dark-toned images.



High-Definition Images with 4K Enhancement Technology

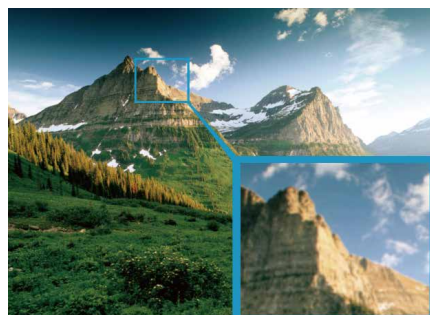
4K Enhancement Technology makes it possible to display pixels at a level of 1080p or higher. Since Epson Laser Light Source Series can accommodate a 4K signal, if you have 4K content and a playback device supporting 4K output, you can enjoy beautiful high-definition images.

Note: This function can only be used with models that support WUXGA and when the input signal is 1080p or higher. It is recommended for projecting HD videos only, not documents.
*Not applicable to EB-L1715S

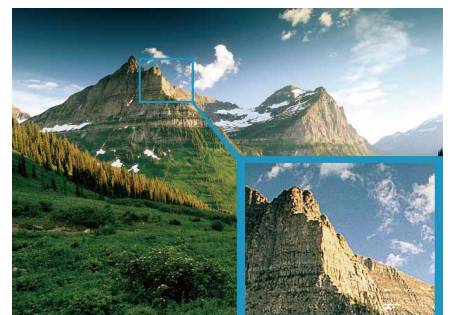


Super-Resolution with Detail Enhancement

Epson's Super-resolution Technology delivers razor-sharp images even when projecting low-resolution content onto large screens.



Without Super-Resolution Technology



With Super-Resolution Technology

Fit Anywhere & Any Surface

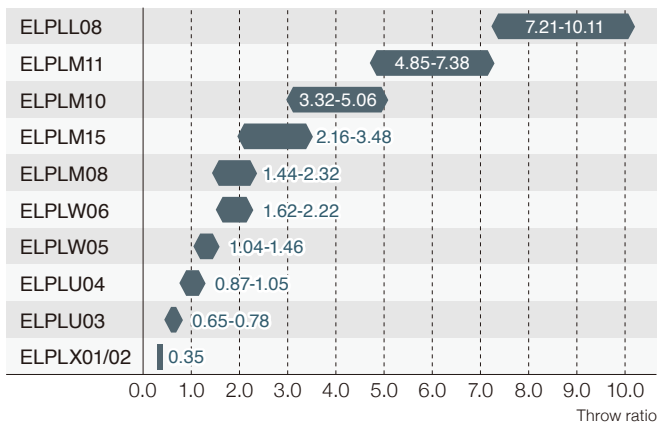
Simple and Compact Design

High-performance functions are accommodated in a simple and compact design. You can use this projector without worrying about the installation location.



Wide-Range of Optical Lenses

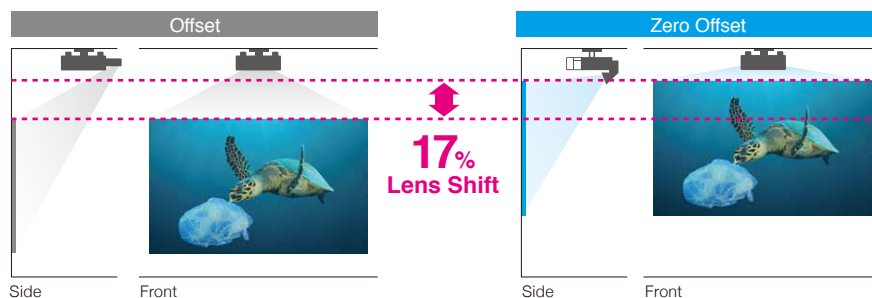
An extensive lineup of optional lenses is available for any venue or subject. And with ELPLX01/X02 zero offset, ultra short-throw lens, you can install the projector in tight spaces.



Zero Offset, Ultra Short-Throw Lens

This lens is especially useful for environments with extremely limited lens-to-screen distances. The short throw ratio of 0.35 with zero-offset and the projector's front-mounted exhaust system let you project onto 100-inch screens from approx. 74cm away. These features combine with lens shift (+17% vertically, $\pm 10\%$ horizontally) to simplify usage where space is at a premium.

17% Lens Shift (Larger image from shorter distances, plus added installation flexibility)



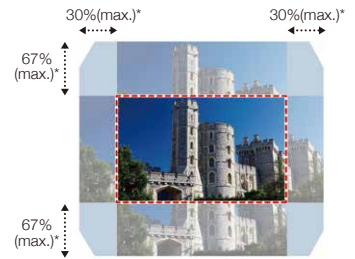
Epson Laser Light Source Series

Wider Lens Shift

The motorized lens shift covers a wide range, giving you a great deal of flexibility when installing the projector. A newly adopted stepping motor lets you make highly precise adjustments when employing edge blending, stacking and other techniques. Adjustments can be made via remote control or over a network, enhancing usability even for ceiling-mounted projectors.

*±67% vertically, ±30% horizontally for EB-L1060U/L1070U
 *±60% vertically, ±18% horizontally for EB-L1490U/L1495U/L1500UH/L1505UH/L1755U
 *±55% vertically, ±19% horizontally for EB-L1715S

Lens shift range



Flexible 360° Installation

Epson Laser Light Source Series can be rotated 360° in any direction — horizontally, vertically and rotationally — without any loss in image brightness. This makes it ideal for a wide range of applications, such as projecting onto ceilings and floors.

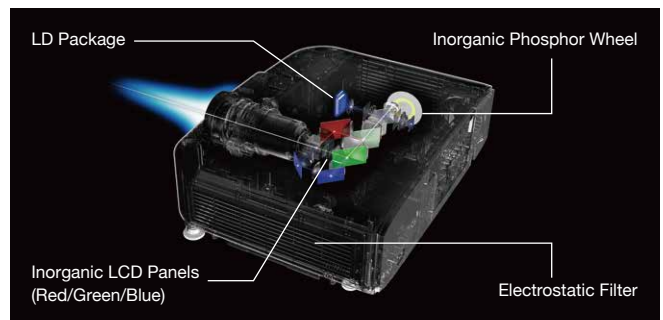


Fit & Forget

Maintenance-Free Light Source

Laser light source can operate for up to 20,000 hours maintenance free^{*1*2} The laser light source is highly reliable, eliminating the worry of the light burning out during important presentations.

*1 No maintenance for the laser light source required up to 20,000 hours.
 *2 Approximate time until brightness decreases 50% from first usage. Measured by acceleration test assuming use of 0.04 - 0.20 mg/m³ of particulate matter. Time varies depending on usage conditions and environments. Replacement of parts other than the light source may be required in a shorter period.

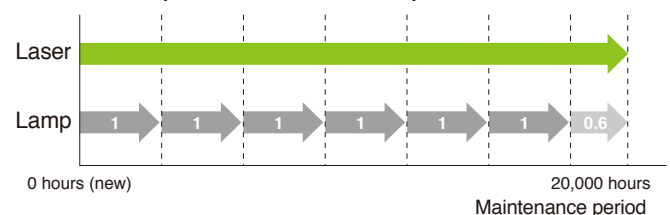


No Worry of Lamp Replacement

It can be used without worrying about lamp replacement thanks to long laser light source life.

Approximate time until brightness decreases 50% from first usage. Measured by acceleration test assuming use of 0.04 - 0.20 mg/m³ of particulate matter. Time varies depending on usage conditions and environments.

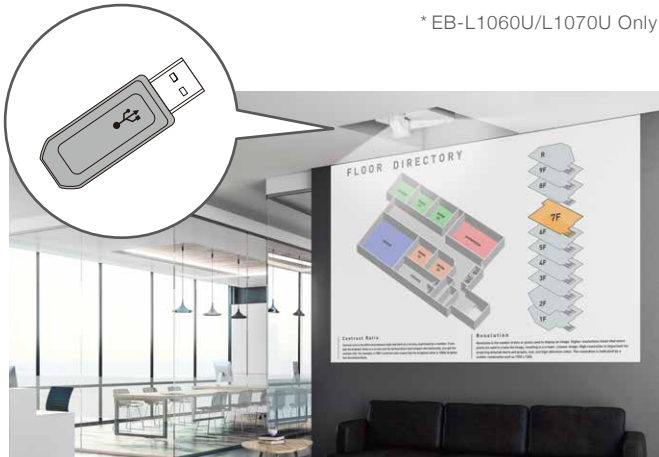
Maintenance period of laser and lamp



For More Professional Use

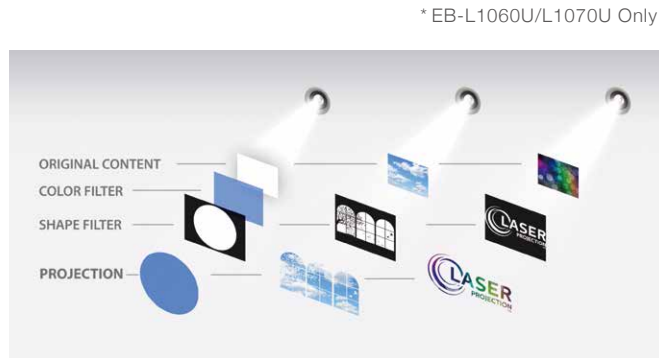
Content Playback

The USB memory support enables you to project USB-stored images and video without using a PC.



Overlay Effect

You can add color filters, shape filters or lightness on top of your projected image, enabling you to deliver a diverse range of visual effects.



HDMI

If a connected device supports the HDMI® CEC standard, there is a function for linking to HDMI®, which enables the linked operation of power on/off, etc. Since connected devices can be operated with the projector's remote controller, it is also possible to specify image and video play by just turning the projector's power on.



Epson Projector Content Manager

Free software that allows you to make playlist. You can edit playlists by

- Adding images and videos
- Setting a schedule
- Setting an overlay effect
- Exporting to USB memory

* EB-L1060U/L1070U Only

STEPS

- 1 Add images or movies to a playlist
Schedule a playlist
Set a custom shape filter
- 2 Save to USB memory
- 3 Project your playlist from the USB memory

HDBaseT Support

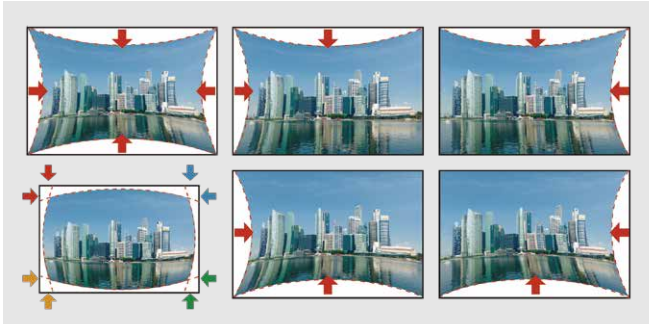
Support for HDBaseT provides Full HD video, audio and Ethernet while the HDBaseT cable enables control from over 100 meters away in networks installed with Category 5e cable† and above — a smart solution for large venues.

* The HDBaseT and the HDBaseT Alliance logos are trademarks of the HDBaseT Alliance.
† STP (Shield Twisted Pair) is recommended.



Curved Surface and Corner Wall

Quickly and precisely correct vertical and/or horizontal distortion when projecting onto curved surfaces, and adjust the shape of images projected onto corners.



Curved Surface

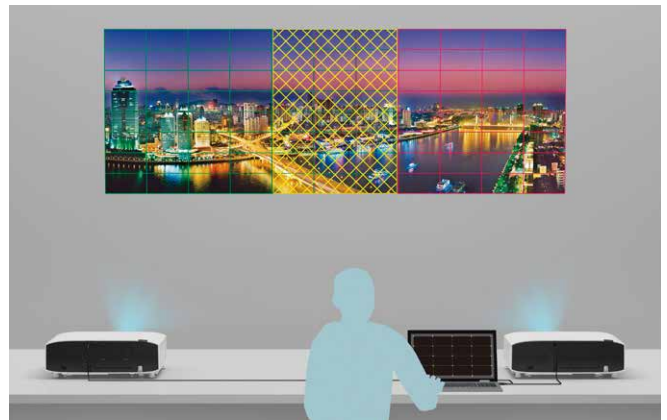


Corner Surface

Epson Projector Professional Tool

Software for matching projected-image borders when multiple projectors are used is provided free of charge. If Epson Projector Professional Tool software is used, operations and settings that previously required separate remote controller operations for each projector can now all be done on a single PC, greatly reducing installation time and effort.

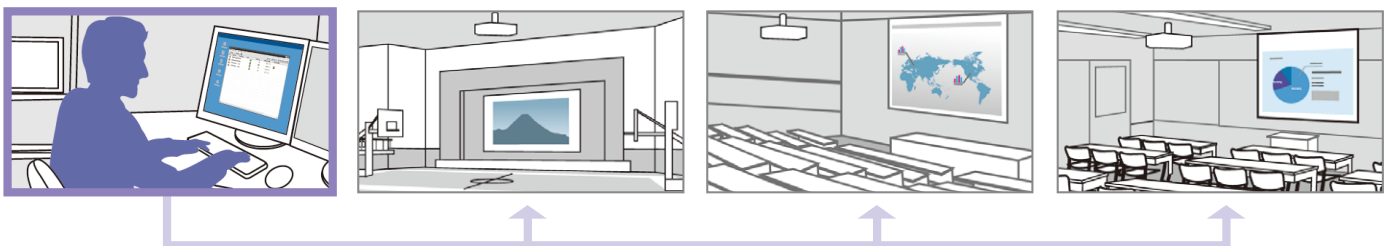
Note: Some functions do not support Epson Professional Tool. Network connection is a requirement for use of Epson Professional Tool.



Epson Projector Management

Using Epson Projector Management allows you to monitor and control multiple network connected projectors (up to 2,000 units) using a computer with easy to use GUI.

A projector's power status, irregularities, warnings, etc. can all be determined visually through the use of icons or you can choose to be notified by email of any projector anomalies.



Easy Setting for Multi Projection

Edge Blending Summary

With Epson Laser Light Source Series, there is a function enabling settings to be easily made even when multiple projectors are used.

Edge blending is a function that makes it possible to bring together the output of two or more projectors by naturally merging the edges of projected images without leaving seams.



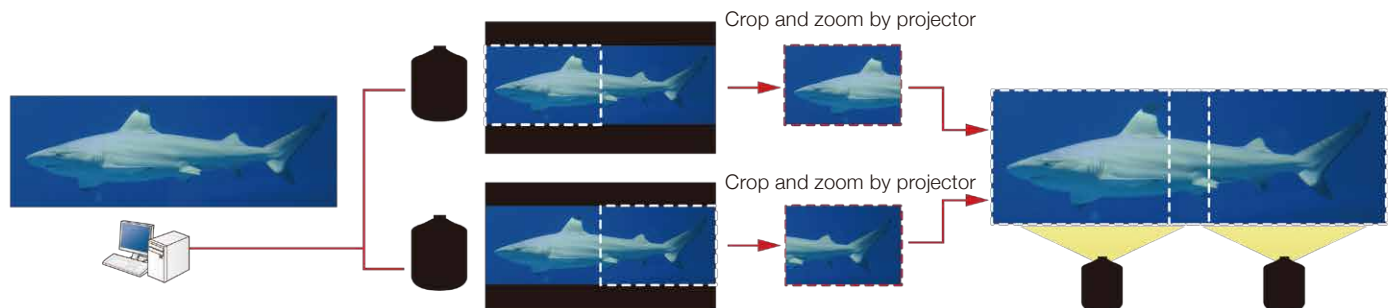
Point Correction

By correcting each of the points laid out in a grid pattern, it is possible to smoothly make adjustments to correct distorted projections and to merge borders where seams exist.



Scale

Combine portions of a single image displayed by multiple projectors into one large image. This function scales and crops a single image, transforming it into a stunning display without the need for additional equipment.



Portrait Projection

Project in portrait mode by rotating the projector 90° - a nice solution, especially for signage, fashion shows, art galleries and museums.



Epson Laser Light Source Series

Projection Distance

EB-L1060U / L1070U

16:10 Screen Size	ELPLL08		ELPLM08		ELPLM10		ELPLM11		ELPLM15		ELPLR04	
	Long Throw Lens		Middle Throw Lens		Middle Throw Lens		Middle Throw Lens		Middle Throw Lens		Rear Lens	
	Shortest (Wide)	Longest (Tele)	Shortest (Wide)	Longest (Tele)	Shortest (Wide)	Longest (Tele)	Shortest (Wide)	Longest (Tele)	Shortest (Wide)	Longest (Tele)	Shortest (Wide)	Longest (Tele)
Screen Size (Inch)	Projection Distance (cm / inch)		Projection Distance (cm / inch)		Projection Distance (cm / inch)		Projection Distance (cm / inch)		Projection Distance (cm / inch)		Projection Distance (cm / inch)	
80	1237 / 487	1737 / 684	248 / 98	399 / 157	571 / 225	869 / 342	832 / 328	1268 / 499	370 / 146	599 / 236	163 / 64	-
100	1555 / 612	2180 / 858	311 / 123	500 / 197	717 / 282	1090 / 429	1046 / 412	1591 / 626	465 / 183	751 / 296	206 / 81	-
150	2348 / 924	3285 / 1293	469 / 185	753 / 296	1082 / 426	1641 / 646	1581 / 623	2398 / 944	702 / 276	1131 / 445	312 / 123	-
200	3141 / 1237	4391 / 1729	627 / 247	1005 / 396	1447 / 570	2193 / 863	2116 / 833	3205 / 1262	938 / 369	1510 / 595	417 / 164	-
300	4728 / 1861	6602 / 2599	943 / 371	1510 / 595	2177 / 857	3296 / 1298	3186 / 1254	4819 / 1897	1411 / 556	2269 / 893	629 / 248	-
500	7901 / 3111	11025 / 4341	1576 / 620	2520 / 992	3637 / 1432	5502 / 2166	5326 / 2097	8047 / 3168	2357 / 928	3787 / 1491	1053 / 414	-
800	12661 / 4985	17659 / 6952	2524 / 994	4035 / 1588	5827 / 2294	8811 / 3469	8536 / 3361	12889 / 5074	3776 / 1487	6064 / 2387	1688 / 665	-

16:10 Screen Size	ELPLU03		ELPLU04		ELPLW05		ELPLW06		ELPLX01	
	Short Throw Zoom Lens		Short Throw Zoom Lens		Wide Zoom Lens		Wide Zoom Lens		Ultra-Short Throw Lens	
	Shortest (Wide)	Longest (Tele)	Shortest (Wide)	Longest (Tele)	Shortest (Wide)	Longest (Tele)	Shortest (Wide)	Longest (Tele)	Shortest (Wide)	Longest (Tele)
Screen Size (Inch)	Projection Distance (cm / inch)		Projection Distance (cm / inch)		Projection Distance (cm / inch)		Projection Distance (cm / inch)		Projection Distance (cm / inch)	
80	111 / 44	134 / 53	149 / 59	181 / 71	178 / 70	251 / 99	279 / 110	381 / 150	-	-
100	140 / 55	168 / 66	188 / 74	227 / 89	225 / 88	315 / 124	350 / 138	478 / 188	74 / 29	-
150	212 / 83	255 / 100	285 / 112	344 / 135	341 / 134	475 / 187	529 / 208	722 / 284	113 / 44	-
200	283 / 112	341 / 134	382 / 151	460 / 181	457 / 180	636 / 250	708 / 279	965 / 380	152 / 60	-
300	427 / 168	513 / 202	576 / 227	693 / 273	690 / 272	956 / 376	1066 / 420	1452 / 572	231 / 91	-
500	714 / 281	857 / 337	964 / 380	1159 / 456	1154 / 455	1597 / 629	1781 / 701	2425 / 955	388 / 153	-
800	1145 / 451	1373 / 541	1546 / 609	1858 / 732	1852 / 729	2559 / 1008	2854 / 1124	3885 / 1530	625 / 246	-

EB-L1490U / L1495U / L1500UH / L1505UH / L1755U

16:10 Screen Size	ELPLL08		ELPLM10		ELPLM11		ELPLM15		ELPLR04		ELPLU03	
	Long Throw Lens		Middle Throw Lens		Middle Throw Lens		Middle Throw Lens		Rear Lens		Short Throw Zoom Lens	
	Shortest (Wide)	Longest (Tele)	Shortest (Wide)	Longest (Tele)	Shortest (Wide)	Longest (Tele)	Shortest (Wide)	Longest (Tele)	Shortest (Wide)	Longest (Tele)	Shortest (Wide)	Longest (Tele)
Screen Size (Inch)	Projection Distance (cm / inch)		Projection Distance (cm / inch)		Projection Distance (cm / inch)		Projection Distance (cm / inch)		Projection Distance (cm / inch)		Projection Distance (cm / inch)	
80	896 / 353	1265 / 498	413 / 163	635 / 250	601 / 237	923 / 363	268 / 105	438 / 172	118 / 46	-	-	-
100	1128 / 444	1589 / 626	519 / 204	797 / 314	757 / 298	1160 / 457	337 / 133	549 / 216	149 / 59	-	-	-
150	1708 / 672	2399 / 945	786 / 309	1202 / 473	1147 / 452	1751 / 689	509 / 201	828 / 326	227 / 89	-	154 / 61	186 / 73
200	2287 / 901	3209 / 1264	1052 / 414	1607 / 633	1538 / 605	2343 / 922	682 / 269	1106 / 436	304 / 120	-	206 / 81	249 / 98
300	3447 / 1357	4830 / 1902	1585 / 624	2417 / 951	2319 / 913	3526 / 1388	1027 / 404	1663 / 655	460 / 181	-	311 / 122	374 / 147
500	5765 / 2270	8071 / 3178	2650 / 1043	4036 / 1589	3881 / 1528	5892 / 2320	1717 / 676	2777 / 1093	771 / 303	-	521 / 205	626 / 247
800	9244 / 3639	12933 / 5092	4248 / 1672	6466 / 2546	6223 / 2450	9441 / 3717	2753 / 1084	4449 / 1751	1237 / 487	-	836 / 329	1004 / 395

16:10 Screen Size	ELPLU04		ELPLW05		ELPLW06		ELPLX02	
	Short Throw Zoom Lens		Wide Zoom Lens		Wide Zoom Lens		Ultra-Short Throw Lens	
	Shortest (Wide)	Longest (Tele)	Shortest (Wide)	Longest (Tele)	Shortest (Wide)	Longest (Tele)	Shortest (Wide)	Longest (Tele)
Screen Size (Inch)	Projection Distance (cm / inch)		Projection Distance (cm / inch)		Projection Distance (cm / inch)		Projection Distance (cm / inch)	
80	108 / 43	131 / 52	129 / 51	182 / 72	202 / 79	277 / 109	-	-
100	136 / 54	165 / 65	163 / 64	229 / 90	254 / 100	348 / 137	74 / 29	-
150	207 / 82	251 / 99	248 / 98	347 / 137	385 / 151	526 / 207	112 / 44	-
200	278 / 110	336 / 132	333 / 131	464 / 183	515 / 203	703 / 277	151 / 59	-
300	420 / 166	507 / 200	504 / 198	699 / 275	777 / 306	1058 / 417	228 / 90	-
500	704 / 277	848 / 334	844 / 332	1169 / 460	1299 / 512	1769 / 696	383 / 151	-
800	1131 / 445	1361 / 536	1356 / 534	1874 / 738	2084 / 820	2834 / 1116	615 / 242	-

EB-L1715S

4:3 Screen Size	ELPLL08		ELPLM10		ELPLM11		ELPLM15		ELPLR04		ELPLU03	
	Long Throw Lens		Middle Throw Lens		Middle Throw Lens		Middle Throw Lens		Rear Lens		Short Throw Zoom Lens	
	Shortest (Wide)	Longest (Tele)	Shortest (Wide)	Longest (Tele)	Shortest (Wide)	Longest (Tele)	Shortest (Wide)	Longest (Tele)	Shortest (Wide)	Longest (Tele)	Shortest (Wide)	Longest (Tele)
Screen Size (Inch)	Projection Distance (cm / inch)		Projection Distance (cm / inch)		Projection Distance (cm / inch)		Projection Distance (cm / inch)		Projection Distance (cm / inch)		Projection Distance (cm / inch)	
80	871 / 343	1232 / 485	401 / 158	619 / 244	583 / 230	899 / 354	260 / 103	427 / 168	115 / 45	-	78 / 31	95 / 37
100	1096 / 432	1547 / 609	505 / 199	777 / 306	735 / 289	1129 / 445	328 / 129	536 / 211	145 / 57	-	99 / 39	120 / 47
150	1661 / 654	2337 / 920	764 / 301	1172 / 462	1114 / 439	1706 / 672	496 / 195	808 / 318	221 / 87	-	150 / 59	181 / 71
200	2225 / 876	3127 / 1231	1023 / 403	1567 / 617	1494 / 588	2283 / 899	663 / 261	1079 / 425	296 / 117	-	201 / 79	242 / 95
300	3354 / 1321	4706 / 1853	1541 / 607	2358 / 928	2253 / 887	3436 / 1353	999 / 393	1623 / 639	448 / 176	-	302 / 119	365 / 144
500	5612 / 2209	7865 / 3096	2578 / 1015	3938 / 1551	3771 / 1485	5742 / 2261	1671 / 658	2710 / 1067	751 / 296	-	506 / 199	610 / 240
800	8999 / 3543	12603 / 4962	4132 / 1627	6309 / 2484	6048 / 2381	9201 / 3623	2678 / 1054	4342 / 1709	1206 / 475	-	812 / 320	978 / 385

4:3 Screen Size	ELPLU04		ELPLW05		ELPLW06		ELPLX02	
	Short Throw Zoom Lens		Wide Zoom Lens		Wide Zoom Lens		Ultra-Short Throw Lens	
	Shortest (Wide)	Longest (Tele)	Shortest (Wide)	Longest (Tele)	Shortest (Wide)	Longest (Tele)	Shortest (Wide)	Longest (Tele)
Screen Size (Inch)	Projection Distance (cm / inch)		Projection Distance (cm / inch)		Projection Distance (cm / inch)		Projection Distance (cm / inch)	
80	105 / 41	128 / 50	125 / 49	177 / 70	196 / 77	269 / 106	-	-
100	132 / 52	161 / 63	158 / 62	223 / 88	247 / 97	339 / 133	72 / 28	-
150	201 / 79	244 / 96	241 / 95	338 / 133	375 / 148	511 / 201	109 / 43	-
200	270 / 106	327 / 129	324 / 128	452 / 178	503 / 198	684 / 269	147 / 58	-
300	407 / 160	493 / 194	490 / 193	681 / 268	758 / 298	1030 / 406	222 / 88	-
500	681 / 268	824 / 324	822 / 323	1139 / 449	1268 / 499	1721 / 678	373 / 147	-
800	1093 / 430	1322 / 520	1319 / 519	1826 / 719	2034 / 801	2759 / 1086	598 / 236	-

Specifications

Model			EB-L1060U	EB-L1070U		
Specification of Main Parts	LCD	Size	0.76-inch (C ² fine)			
		Pixel Number	2,304,000 dots (1920 x 1200) x 3			
	Projection Lens	Native Resolution	WUXGA (16:10)			
		Type	Power zoom / Power focus / Power shift			
Light Source	F-Number / Focal Length	1.7 - 2.3 / 24.0mm - 38.2mm				
	Type	Laser Diode				
	LD Input Power	95W (Light Source mode:Normal, Environment Temperature:25°C)	115W (Light Source mode:Normal, Environment Temperature:25°C)			
	Life (Normal/Quiet/Extended)	20000 hours / 20000 hours / 30000 hours				
	Optical System	Dichroic mirror separation & prism combine method				
Screen Size (Projected Distance)		50" to 1000" [1.53m to 31.57m] (Zoom: W)				
		50" to 1000" [2.48m to 50.44m] (Zoom: T)				
Lens Shift Range		Throw ratio: 1.44 (Zoom:W), 2.33 (Zoom:T)				
		Vertical: -67% to +67% (H Center) Horizontal: -30% to +30% (V Center)				
Light Output (Brightness)		6000 lm (Color mode: Dynamic, Zoom: Wide, Lens shift: V Center / H Center)	7000 lm (Color mode: Dynamic, Zoom: Wide, Lens shift: V Center / H Center)			
Color Light Output (Color Brightness)		6000 lm (Color mode: Dynamic, Zoom: Wide, Lens shift: V Center / H Center)	7000 lm (Color mode: Dynamic, Zoom: Wide, Lens shift: V Center / H Center)			
Contrast	Dynamic Contrast: On	Over 2,500,000:1				
Color Reproduction		Up to 1.07 billion colors				
Adjustment Function	Image	Color Mode	Dynamic Presentation			
			Cinema			
			BT.709			
			Natural			
			DICOM SIM			
			Multi-Projection			
			4K Enhancement			
			Image Preset Mode			
			Frame Interpolation			
			Noise Reduction			
	MPEG Noise Reduction					
	Super-resolution					
Geometry Correction	Image Enhancement	4K Enhancement	Yes			
			Image Preset Mode			
			Frame Interpolation			
			Noise Reduction			
			MPEG Noise Reduction			
			Super-resolution			
Analog Video I/O	Input Terminal	Video	D-sub 15pin x 1, 5 BNC x 1			
			Output Terminal	D-sub 15pin x 1		
	Digital Video I/O			Input Terminal	HDMI x 1, DVI-D x 1, HDBaseT x 1	
			Audio I/O		Input Terminal	Stereo mini x 3
	Control I/O			Serial I/O		Terminal
			Network I/O		Wired LAN	
Wireless LAN	Supported Speeds for each mode	RS-232C				
		RJ45 x 1				
Type A (for Wireless LAN, Firmware update, Copy OSD Settings, Content playback)						
Optional						
IEEE 802.11b: 11 Mbps*						
IEEE 802.11g: 54 Mbps*						
IEEE 802.11n: 130 Mbps*						
*Maximum speed and range is achievable when used with same enhanced mode technology. Actual data rates, features and performance may vary depending on your computer system, the environment and other factors.						
Start-up Period		Less than 7 seconds				
Direct Power On		Warm-up period: 30 seconds				
Direct Power Off		Yes				
Auto Power On		Yes				
Cool-down Period		Instant off				
Power Supply Voltage		100 - 240 V AC +/- 10%, 50/60 Hz				
Power Consumption 220-240V	Lamp On (Normal / Extended)	345W / 252W	416W / 299W			
	Networked Standby / Energy Saving	2W / 0.5W				
Dimension	Exclude Feet (W x H x D)	545 x 164 x 436mm				
Weight (Including Standard Lens)		Approx. 37.3 lbs. / 16.9kg				
Fan Noise	Light Source Mode: Normal	34 dB	36 dB			
	Light Source Mode: Quiet	30 dB				

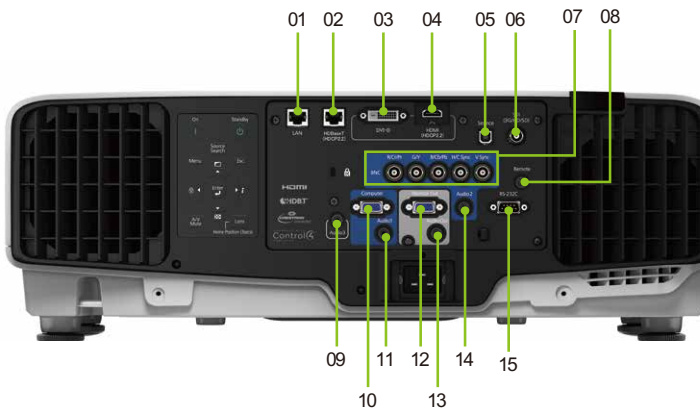
* When you project an over 500 inches image, the image may become a little bit blurred.

Epson Laser Light Source Series



EB-L1490U / L1495U		EB-L1500UH / L1505UH		EB-L1715S		EB-L1755U	
1.03-inch (D10)				1.06-inch (D10)		1.03-inch (D10)	
				1,470,000 dots (1400 x 1050) x 3		2,304,000 dots (1920 x 1200) x 3	
				SXGA+ (4:3)		WUXGA (16:10)	
1.8 - 2.3 / 36.0mm - 57.4mm							
450W (Light Source mode:Normal, Environment Temperature:25°C)		670W (Light Source mode:Normal, Environment Temperature:25°C)		760W (Light Source mode:Normal, Environment Temperature:25°C)			
60" to 1000" [1.99m to 34.43m] (Zoom: Wide)*				60" to 1000" [1.93m to 33.50m] (Zoom: Wide)*		60" to 1000" [1.99m to 34.43m] (Zoom: Wide)*	
60" to 1000" [3.26m to 55.63m] (Zoom: Tele)*				60" to 1000" [3.18m to 54.29m] (Zoom: Tele)*		60" to 1000" [3.26m to 55.63m] (Zoom: Tele)*	
Throw ratio: 1.57 - 2.56				Throw ratio: 1.62 - 2.56		Throw ratio: 1.57 - 2.56	
Vertical: -60% to +60% (H Center) (Powered)				Vertical: -55% to +55% (H Center) (Powered)		Vertical: -60% to +60% (H Center) (Powered)	
Horizontal: -18% to +18% (Vertical±31%) (Powered)				Horizontal: -19% to +19% (Vertical±31%) (Powered)		Horizontal: -18% to +18% (Vertical±31%) (Powered)	
9000lm (Color mode: Dynamic, Zoom: Wide, Lens shift: V Center / H Center)		12000lm (Color mode: Dynamic, Zoom: Wide, Lens shift: V Center / H Center)		15000lm (Color mode: Dynamic, Zoom: Wide, Lens shift: V Center / H Center)			
9000lm (Color mode: Dynamic, Zoom: Wide, Lens shift: V Center / H Center)		12000lm (Color mode: Dynamic, Zoom: Wide, Lens shift: V Center / H Center)		15000lm (Color mode: Dynamic, Zoom: Wide, Lens shift: V Center / H Center)			
				N/A		Yes	
HDMI x 1, DVI-D x 1, HDBaseT x 1, SDI x 1				HDMI x 1, DVI-D x 1, HDBaseT x 1		HDMI x 1, DVI-D x 1, HDBaseT x 1, SDI x 1	
Type A (for Wireless LAN, Firmware update, Copy OSD Settings)							
626W / 512W		908W / 597W		1024W / 647W			
2W / 0.3W							
586 x 185 x 492 mm							
Approx. 52.3 lbs. / 23.7 kg				Approx. 53.0 lb. / 24.0 kg		Approx. 53.2 lb. / 24.1 kg	
37 dB				40 dB			

Specifications



Epson Laser Light Source Series

01 LAN	02 HDBaseT (HDCP 2.2)	03 DVI-D
04 HDMI (HDCP 2.2)	05 Service Port	
06 SDI (3G/HD/DG) (EB-L1490U/L1495U/L1500UH/L1505UH/L1755U only)		
07 5BNC	08 Remote	09 Audio 3
10 Computer	11 Audio 1	12 Monitor Out
13 Audio Out	14 Audio 2	15 RS-232C

Lens Compatibility Chart

Lens Model / Projector Model	EB-L1060U	EB-L1070U	EB-L1490U / L1495U	EB-L1500UH / L1505UH	EB-L1715S	EB-L1755U
ELPLL08	✓	✓	✓	✓	✓	✓
ELPLM08	✓	✓				
ELPLM10	✓	✓	✓	✓	✓	✓
ELPLM11	✓	✓	✓	✓	✓	✓
ELPLM15	✓	✓	✓	✓	✓	✓
ELPLR04	✓	✓	✓	✓	✓	✓
ELPLU03	✓	✓	✓	✓	✓	✓
ELPLU04	✓	✓	✓	✓	✓	✓
ELPLW05	✓	✓	✓	✓	✓	✓
ELPLW06	✓	✓	✓	✓	✓	✓
ELPLX01	✓	✓				
ELPLX02			✓	✓	✓	✓

Precautions when a Using Laser Device

This projector is a class 1 laser product that complies with the IEC60825-1:2014 international standard on lasers. If they are not handled correctly, injuries could occur. Note the following points.

Warning

- If an error occurs in the projector, turn off the power immediately, unplug the projector from the outlet, and contact your local dealer or the nearest Epson repair center. Continuing to use it in an error condition may result in an electric shock, fire, or visual impairment.
- Never attempt to disassemble or modify the projector. The projector contains a high-power laser component. This could cause serious injury.
- Do not look into the lens during projection. Also, do not look into the lens using optical devices (such as a magnifying glass or telescope). This could cause visual impairment.
- When turning on the projector at a distance using the remote control, make sure there is no one looking into the lens.
- Do not allow small children to make operations. If children do make operations, they must be accompanied by an adult.
- Do not apply optical devices, such as a magnifying glass or reflector, to the projected image. Continuing to use it in this condition may result in physical harm. It could also cause a fire or an accident.
- Before starting projection, check that there is nothing in the surrounding area that could reflect the projected image.
- When disposing of the projector, do not disassemble it. Dispose in accordance with your local or national laws and regulations.



2 Year Onsite Warranty Service to be provided for local purchase only.

The warranty service can be extended by purchasing Epson Coverplus Extended Warranty. For more information, please contact Epson customer support.

For Standard warranty terms & conditions, please refer to <https://www3.epson.com.hk/eservice/tcs.html>

Bold, Bright, Beautiful...3LCD Technology

3LCD technology achieves bright, natural images and smooth, sharp video playback. No color break-up makes images gentle on the eyes.



Optical unit with high light-use efficiency



R & B COMPUTER SYSTEMS LTD.
力衡電腦系統有限公司

☎ 2749 3325 🌐 www.rnb.com.hk
✉ rnb@rnb.com.hk

Unit 1009, Global Gateway Tower, 63 Wing Hong Street, Cheung Sha Wan, Kln., HK
香港九龍長沙灣永康街 63 號 Global Gateway Tower 1009 室



Epson Hong Kong Limited

Unit 715-723, 7/F Trade Square, 681 Cheung Sha Wan Road, Cheung Sha Wan, Kowloon, H.K.
*Please call our sales hotlines for demonstration at our showroom.

Epson Authorized Customer Service Centre
Wah Fung Computer Services Ltd.
Unit 901, 9/F, Westin Centre, 26 Hung To Road,
Kwun Tong, Kowloon, Hong Kong

HK Sales Hotline : (852) 2827 8711
HK Technical Hotline : (852) 2827 8911
Macau Hotline : (853) 2850 8065

URL: www.epson.com.hk

AUG19-01-PROJECTOR