

我們已服務香港超過130間學校安裝LED顯示屏  
We served more than 130 schools in HK for installing LED Wall



● 禮堂 LED Wall



● 禮堂 LED Wall



● 小禮堂 LED Wall



● 禮堂開合式 LED Wall (圖片為左右正在分開)



● 更多.....



Tel: (852) 2155 8330

Fax: (852) 2155 9030

Email: info@pro-vision.com.hk

Website: http://www.pro-vision.com.hk



R & B COMPUTER SYSTEMS LTD.

力衡電腦系統有限公司

2749 3325

www.rnb.com.hk  
rnb@rnb.com.hk

Unit 1009, Global Gateway Tower, 63 Wing Hong Street, Cheung Sha Wan, Kln., HK  
香港九龍長沙灣永康街 63 號 Global Gateway Tower 1009 室

細緻 · 可靠 · 靈活

LED Display Wall  
顯示幕牆



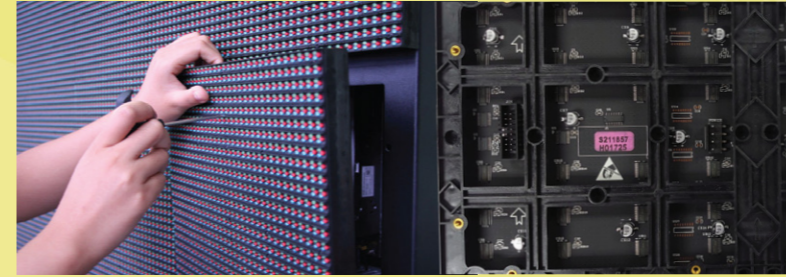
## 更精細 Fine

- 低至P1.25mm像素間距 (間距越低影像越精細)  
Down to P1.25mm pixel pitch
- 7,680Hz 高刷新率(刷新率越高畫質越高)  
Up to 7,680Hz refresh rate
- 高至160°可視角度，確保影像在多角度都能清晰觀看  
Up to 160° viewing angle



## 更迅速 Rapid

- 自設香港維修團隊提供現場、快捷的維修服務，無需將零件運送到工廠，減少維修時間和額外費用  
We own maintenance team in HK to provide rapid on-site maintenance service which avoids extra time and cost on sending item back to factory

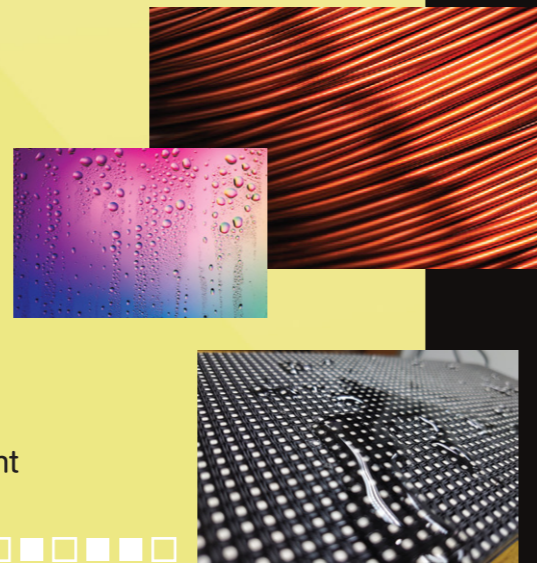


- 提供最少10%零件備件，免除因維修而訂購、生產和運送零件的時間  
Offer at least 10% back-up parts for future maintenance to save time on ordering/producing / delivering parts



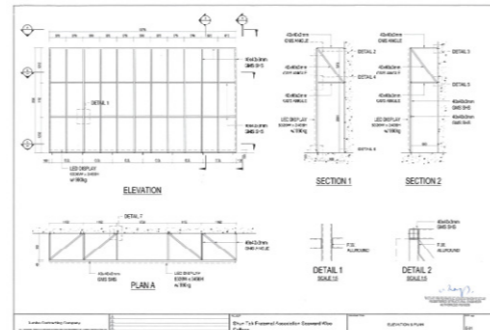
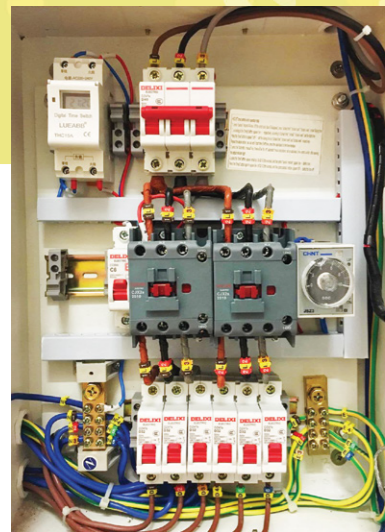
## 更耐用 Durable

- 採用全銅線/銅支架LED模組，在防潮和對抗高低溫方面比傳統鐵支架更優勝  
Use copper wire/bracket on every LED module - more durable than traditional iron bracket against heat/coldness/moisture
- IP43 / IP65 (室內/戶外) 防水 / 防塵 / 防刮設計  
IP43 / IP65 (Indoor / Outdoor) Water / Dust / Scratch Resistant



## 更安全 Safe

- 能提供RSE安全報告書(由註冊工程師簽發)和機電工程署的WR1完工證明書  
We can provide RSE report (authorized by registered structural engineer) and EMSD's WR1 cert



- 採用三相供電，避免跳制 / 設定自動開關時間 / 遙控開關 / 雙向開關  
Use three-phase power supply to avoid tripping/set on & off time/remote on & off/two-way on & off

## 更靈活 Flexible

- 開合移動式屏幕(手動或電動移動)及屏幕觸控功能可供選擇  
Movable split screen (manual/electric) and touch screen function for option



- 尺寸(16:9/訂造)、安裝方法(掛牆式/箱體式)、解像度(HD/4K)、邊框闊度、影像處理器、燈珠製造商、集成電路(刷新率)、鍍膜(SMD / AOB / GOB / COB)等都可供選擇  
Options available on Size (16:9 / custom made), Installation (wall mount/cabinet), Resolution (HD/4K), Bezel Width, Processor, Manufacturer of LED Lamp, Integrated Circuit (refresh rate), Coating (SMD/AOB/GOB/COB), etc

## 更專業 Professional

- ProVision走線方案能支援最少兩個品牌的影像處理器，避免日後因處理器故障和停產而造成不能更換的問題  
ProVision's wiring diagram supports at least two brands of processor to avoid problems on replacing new processor when needed
- 提供專業軟件方案，如支援多個裝置同時屏幕鏡射  
Provide software solution as well, e.g. multiple devices screen mirroring
- 一個月內完工 (由下單到零死點零光點驗收)  
Complete project without dead pixel within one month since the order is placed

