



Multimedia Projector

EB-S31 / EB-X31 / EB-W32 / EB-U32

MODEL	EB-S31	EB-X31	EB-W32	EB-U32
Specification of Main Parts				
LCD	0.55 inch (D7)	0.55 inch (D9,C2fine)	0.59 inch (D9,C2fine)	0.67 inch (D10,C2fine)
Pixel Number	480,000 dots (800 x 600) x 3	786,432 dots (1024 x 768) x 3	1,024,000 dots (1280 x 800) x 3	2,304,000dots (1,920 x 1,200) x 3
Native Resolution	SVGA	XGA	WXGA	WUXGA
Aspect Ratio	4:3		16:10	16:10
Projection Lens	Focus (Manual)	Optical Zoom (Manual) / Focus (Manual)		
F-Number	1.44	1.58-1.72		1.50-1.71
Focal Length	16.7 mm	16.9 mm - 20.28 mm		20.42 mm - 24.50 mm
Zoom Ratio	1.0 - 1.35 (Digital Zoom)	1-1.2		
Lamp	Type 200 W UHE			
Life	5,000 hours (Brightness Control: Normal) / 10,000 hours (Brightness Control: Eco) 6,000 hours (Brightness Control: Eco)			
Screen Size [Projection Distance] (Zoom: Wide)	30" to 350" [0.88 to 10.44 m]	30" to 300" [0.9 to 9.0 m]	33" to 320" [0.9 to 9.0 m]	30" to 300" [0.87 to 9.02 m]
Offset	8:1	Throw ratio: 1.48	Throw ratio: 1.3	Throw ratio: 1.38
Light Output*# (Brightness)	3,200 lm / 2,240 lm			
Color Light Output*# (Color Brightness)	3,200 lm			
Contrast#	15,000:1			
Sound Output	2W Monaural			
AV mute	YES			
Keystone Correction	Vertical	-30 to +30 degrees (Auto)		
	Horizontal	-30 to +30 degrees (Slider)		
Quick Corner	YES			
Video I/O	IN	Analog	D-sub 15pin	1 (Blue molding)
			RCA	1 (Yellow)
			Mini DIN 4pin	1
		Digital	HDMI	HDMI x 1
			HDMI	HDMI x 1
			HDMI	HDMI x 1 (Supports MHL)
			HDMI	HDMI x 2 (1 Supports MHL)
Audio I/O	IN	2 RCA x 1 (White/Red)		1
USB I/O	Type A	Video		1 (For USB Memory, USB Document Camera, Wireless LAN, Firmware update)
	Type B			1 (For USB Display, mouse, K/B, Control, Firmware update)
Network I/O	Wired LAN	RJ45		N/A
	Wireless LAN			Optional (ELPAP10)
Wireless Specification	Supported Speeds for each mode		IEEE 802.11b: 11 Mbps [^] IEEE 802.11g: 54 Mbps [^] IEEE 802.11n: 130 Mbps [^]	
Operating Temperature	5°C to 35°C <41°F to 95°F> (0 m / 0 ft to 2,286 m / 7,500 ft) 5°C to 30°C <41°F to 86°F> (Over 2,286 m / 7,500 ft) (20% - 80% humidity, unfrozen)			
Operating Altitude	0 m to 3,000 m <0 ft to 9,843 ft> (Over 1,500 m / 4,921 ft : with High altitude mode)			
Storage Temperature	-10°C to 60°C <14°F to 140°F> (10% - 90% humidity, unfrozen)			
Direct Power On	Yes			
Direct Power Off	Yes			
Start-up Period	about 5 seconds warm-up period: 30 seconds			
Cool-down Period	Instant off			
Exhaust Direction	Front			
Intake Direction	Side			
Theft Proof	Padlock & Security Cable Hole	Yes		
	Kensington Lock	Yes		
Power Supply Voltage	100 - 240 V AC +/- 10%, 50/60 Hz			
Power Consumption	200-240V Area	Lamp On	277W	
		Energy Saving	0.26W	
Dimension	Exclude Feet (W x H x D)		297 x 77 x 234 mm	
Weight			Approx. 5.29 lbs. / 2.4kg	
Fan Noise	Power consumption: Normal / Eco		37 dB / 28 dB	

* Light Output / Color Light Output (Compliant with IDMS15.4) # Color mode: Dynamic, Zoom: Wide

[^]Maximum speed and range is achievable when used with same enhanced mode technology. Actual data rates, features and performance may vary depending on your computer system, the environment and other factors.

SUPPLIED ACCESSORIES

- Power Cable 1.8 m
- Remoted Control with AA type alkaline batteries x 2 pcs
- Computer Cable 1.8 m
- Soft Carrying Case
- Epson Projector Software



2 Year Onsite Warranty Service to be provided for local purchase only.

The warranty service can be extended by purchasing Epson Coverplus Extended Warranty. For more information, please contact Epson customer support.

For Standard warranty terms & conditions, please refer to <https://www3.epson.com.hk/eservice/tcs.html>

OPTIONAL ACCESSORIES

- ELPLP88 Spare Lamp
- ELPAF32 Air Filter Set
- ELPAP10 Wireless LAN Unit (for EB-S31 / X31)
- ELPAP09 Quick Wireless Connection USB Key
- ELPDC20 Image Presentation Camera
- ELPDC11 USB Document Camera

Better Products for a Better Future

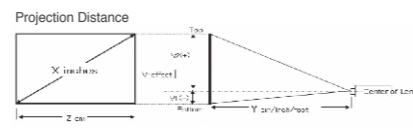
For more information on Epson's environmental programs, go to <http://eco.epson.com>

Bold, Bright, Beautiful...3LCD Technology

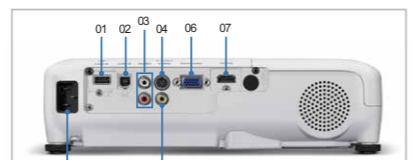
3LCD technology achieves bright, natural images and smooth, sharp video playback. No color break-up makes images gentle on the eyes.



Optical unit with high light-use efficiency

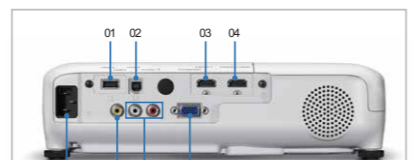


Screen [inch] (X)	Projection distance (Y)				Offset A	
	Wide		Tele		Wide = Tele	
	cm	inch	cm	inch	V1cm	V1inch
60	178	70	217	85	-7	-2.9
80	238	94	291	114	-10	-3.9
100	299	118	364	143	-12	-4.8
150	450	177	548	216	-18	-7.2



Connector Panel EB-S31 / X31 / W32

- 01 USB (Type A) 02 USB (Type B) 03 Audio
- 04 S-Video 05 Video Input Port 06 Computer (D-SUB15)
- 07 HDMI (EB-S31/X31) HDMI / MHL (EB-W32) 08 Power Inlet



Connector Panel EB-U32

- 01 USB (Type A) 02 USB (Type B) 03 HDMI 1
- 04 HDMI 2 / MHL 05 Video Input Port 06 Audio
- 07 Computer (D-SUB15) 08 Power Inlet

Screen [inch] (X)	Projection distance (Y)				Offset A	
	Wide		Tele		Wide = Tele	
	cm	inch	cm	inch	V1cm	V1inch
60	168	66	202	79	-7	-2.8
80	225	88	270	106	-10	-3.8
100	281	111	338	133	-12	-4.7
150	424	167	509	200	-18	-7.1

Screen [inch] (X)	Projection distance (Y)				Offset A	
	Wide		Tele		Wide = Tele	
	cm	inch	cm	inch	V1cm	V1inch
60	180	71	217	85	-10	-4
80	241	95	290	114	-14	-5.3
100	302	119	363	143	-17	-6.7
150	454	179	546	215	-25	-10

Screen [inch] (X)	Projection distance (Y)				Offset (V1)			
	Wide		Tele		Wide		Tele	
	cm	inch	cm	inch	V1cm	V1inch	V1cm	V1inch
60	177	70	240	94	-10	-3.9	3	1
80	237	93	321	126	-13	-5.2	3	1.3
90	297	117	401	158	-17	-6.5	4	1.7
100	446	176	603	287	-25	-9.8	6	2.5



Color Light Output 3,200lm

15,000 : 1 Contrast

Up to WUXGA resolution

USB Slide Show

Wireless Connection

Convenient HDMI / MHL Connectivity

Epson Hong Kong Limited

Unit 715-723, 7/F Trade Square, 681 Cheung Sha Wan Road, Cheung Sha Wan, Kowloon, H.K.
* Please call our sales hotlines for demonstration at our showroom.



R & B COMPUTER SYSTEMS LTD.
力衡電腦系統有限公司

2749 3325 www.rnb.com.hk
rnb@rnb.com.hk

Unit 1009, Global Gateway Tower, 63 Wing Hong Street, Cheung Sha Wan, Kln., HK
香港九龍長沙灣永康街 63 號 Global Gateway Tower 1009 室

Epson Multimedia Projector

EB-S31 / EB-X31 / EB-W32 / EB-U32

Brightness

You can enjoy beautiful and clear images wherever you go without worrying about ambient light levels.

3200lm
Color Light Output
15000:1
contrast



Easy and Flexible Usability

Horizontal Keystone

With horizontal keystone correction, the projector doesn't need to be directly in front of the screen; it can be placed where you want it to be, for more flexible installation options.



Home Screen

The **Home Screen** is newly supported function. The home screen displays functions which are used the most frequently, including source, wireless connection status. So, they can be accessed easily and immediately. On default setting, home screen will automatically appear when no signal is input. When signal is input, users can move to home screen by pushing home button on control panel or remote.



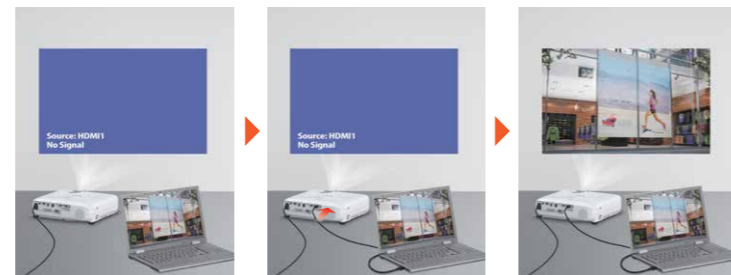
WUXGA Resolution

Epson was first to offer WUXGA resolution (1,920 x 1,200) for 3LCD projectors in entry segment, providing much broader work-space. It allows displaying contents that include vast amounts of information or complicated figure at the same time and full HD contents (1,920 x 1,080) without size reduction on images.



Auto Source Search

The projector automatically detects the input source to allow projection to automatically begin while the user doesn't need to switch the input manually.



Auto Power On

The projector will automatically turn on once the projection signal is detected via USB, VGA or RGB cable, providing you with an easy and hassle-free presentation. There is no need to turn on the power using the remote control or the power button on the projector itself.



Advanced Operation with Wider Connectivity

HDMI / MHL Connectivity

Depending on the situation, you can choose from a variety of connection methods including HDMI, VGA and USB. Furthermore, the EB-U32 is now equipped with 2 HDMI ports (one of which supports MHL) for enhanced digital input.

EB-S31 / EB-X31	HDMI x 1
EB-W32	HDMI x 1 (Supports MHL)
EB-U32	HDMI x 2 (One supports MHL)

Wireless Connection (Built-in / Optional)

EB-U32 and EB-W32 have internal wireless functionality, so they can connect wirelessly all on its own. Furthermore, the EB-S31 and EB-X31 can also connect wirelessly via the optional ELPAP10 wireless module.

With wireless connection, you can now transfer images and files from your smart devices to Epson networking projectors by using «Epson iProjection» application.



«Epson iProjection» — Free and Available for download on Apple App Store and Google Play Store



Split Screen Function

The split screen function allows 2 separate image sources to be projected on a single screen. Using this function allows the projector to perform a dual role, eliminating the need for a second projector.



2HDMI + MHL
(Available in EB-U32)

Multi PC Projection

The Multi PC Projection feature allows a network of up to 50 PCs / smart devices to be connected to a single projector. It allows a host PC to act as a Moderator who can then select up to 4 of these connected PCs / smart devices and project their screens. The addition of a Moderator helps to maintain control and prevent tampering with the projected screen.



Content USB Slide Show

Simply save pictures as JPEG data on a USB memory device, insert into the projector and your pictures are projected automatically. The viewer can see beautiful pictures as they are for a more dramatic impression.



Up to 10,000h Lamp Life

The long-life lamp will last up to 10,000 hours, which minimizes lamp replacement, and therefore reduces total cost of ownership.

